



THE TERWA — NORDIC HIDEAWAY MEETINGS 2026-2027

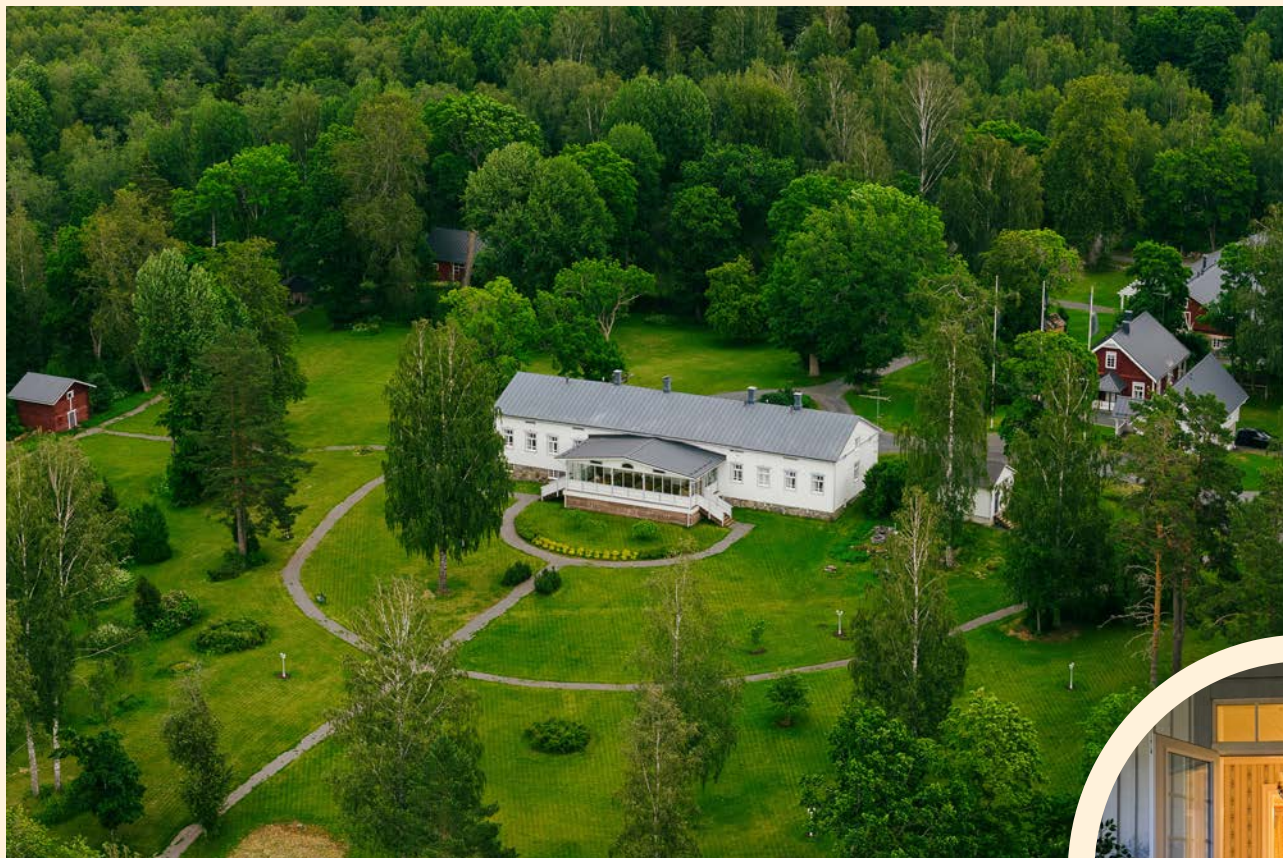
MEETINGS AND CORPORATE EVENTS IN THE CALM OF NATURE

Host your meeting in a historic and peaceful setting.

At The Terwa, a 400-year-old manor estate meets beautiful lake views, warm hospitality and high-quality local food.

The Terwa combines cultural history with modern comfort in a way that feels personal and inspiring. Every event can be tailored to match your needs from start to finish.







A PREMIUM BOUTIQUE HOTEL IN THE HEART OF FINLAND — JUST OVER ONE HOUR AWAY FROM THE LARGEST CITIES

Book the whole area for private use or building by building – one hour away from the airport

- The Terwa is a premium destination hotel located on a private peninsula by Lake Kaartjärvi, just over one hour from the largest cities and Helsinki-Vantaa Airport.
- The Terwa is a historic, premium-level destination hotel. The roots of the area date back to 500 BC, with a manor heritage beginning in the 1600s. The entire manor estate and its surroundings can be reserved for exclusive private use or booked building by building.
- The Terwa also offers spaces for smaller events, meetings, and retreats. Services are available in Finnish and English, and events are hosted by reservation for groups of more than eight people.
- Accommodation includes 15 double rooms with extra beds, providing lodging for up to 36 guests.
- Additional accommodation is available at Villa K, offering five double bedrooms that can be combined with your booking.
- The Manor House is equipped with high-quality hybrid meeting facilities for up to 25 people. The renovated Barn Hall (Navetta) offers celebration and seminar spaces for up to 300 guests, with seated dining for 200, along with several additional meeting rooms.
- Dining is led by a Rotisseur-level head chef, with menus built around high-quality Finnish local ingredients.
- The manor's historic park features 3.6 kilometers of well-maintained walking paths, as well as beach volleyball and frisbee golf. From the courtyard, the Lynx Trails offer guided hiking and mountain biking routes, and a high-quality par-3 golf course is located just 1 km away.
- A wide range of activities is available, from freediving to creating your own personalized fragrance.
- The estate offers two meeting saunas: the atmospheric Karsina sauna and the lakeside LakeSpa sauna.
- Guests can enjoy lake swimming or ice swimming, hot tubs, wood-heated saunas, electric saunas, and a meeting sauna with a sleeping loft.
- Liesjärvi National Park and the Komio Nature Reserve are located nearby.
- The grounds of the manor, once dedicated to tar burning and ore processing, are crossed by preserved historic paths that remain part of the original landscape.

THE TERWA MEETING PACKAGES FOR COMPANIES

The Terwa offers nature-based, high-quality and historic surroundings for meetings on the shores of the clear-water Kaartjärvi lake. Packages are available for two or three days and can also be customized.

There are two main options:

1. The entire peninsula can be reserved for private use, including all buildings and accommodation, with no other guests on site.
2. Alternatively, specific buildings can be reserved based on your needs, with more moderate costs and possible other guests in the area.

Both options are available as one-, two- or three-day packages.



I. EXAMPLE OF A TWO-DAY PRIVATE MEETING (8-30PAX)

Reserve the entire manor estate for private use for just you and your guests. The package includes nearly all of The Terwa's facilities and 15 double rooms with concierge service.

This two-day package is ideal for intensive workshops, strategy days, and executive team retreats. Meetings can be arranged in the cozy Manor Hall, in the rustic Karsina, or in the high-spec Headquarters (Päämaja). The evening culminates in a shared dinner and relaxation at the Lake Spa (JärviSpa).

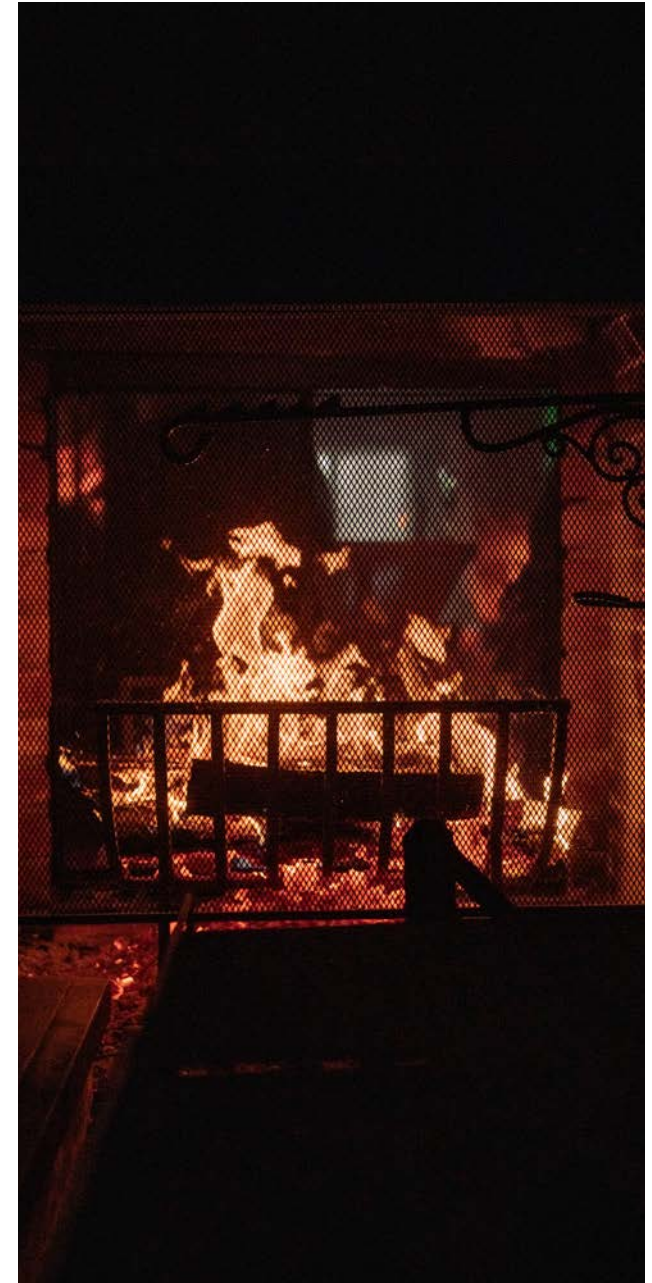
Includes:

- All facilities for private use except the banquet barn: the Manor, Karsina, Wine Cellar, Headquarters (Päämaja), Maisematupa, Lake Spa (JärviSpa), Väentupa, Boathouse, Beach Cabin, and a 10-hectare historic park
- 15 double hotel rooms
- Meeting equipment, sound system, Wi-Fi
- Concierge service
- Free parking

Facilities fee: 5 219€ (VAT 0%)

Event duration from 9:00 a.m. until 4:00 p.m. the following day. TBA

Please see the following pages for catering details.



2. THE TERWA TWO-DAY MEETING PACKAGE, MANOR, LAKE SPA SAUNA & BOATHOUSE (8—20PAX)

- The Terwa Manor: 8 double bedrooms; 3 rooms with en-suite bathrooms, plus 2-bedroom and 3-bedroom suites with private bathrooms
- Boathouse (Venevaja), a stunning villa built over the water
- LakeSpa sauna experience, including an electric and wood-heated saunas and hot tubs
- The Lake Spa features a full-height loft that comfortably accommodates 2 guests overnight
- The Manor Hall and lounge, as well as the Lake Spa living room, also functioning as meeting spaces and are equipped with standard meeting facilities for hybrid meetings

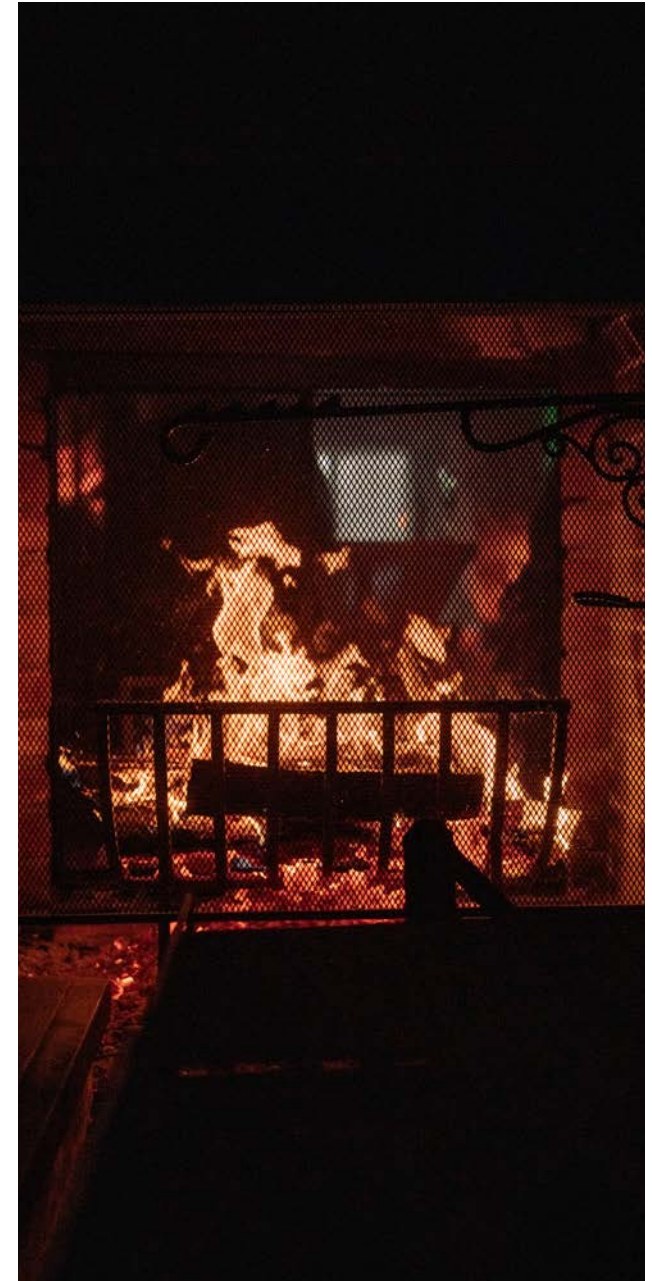
Includes:

- Exclusive use of the Manor, sauna facilities, and Boathouse
- 10 double hotel rooms
- Meeting equipment, sound system, Wi-Fi
- Manor staff
- Free parking

Facilities fee: 2 982€ (VAT 0%)

Event duration from 9:00 a.m. until 4:00 p.m. the following day. TBA

Please see the following pages for catering details.



SAMPLE PROGRAM FOR A TWO-DAY MEETING INCLUDING MEALS (15PAX):

Day1:

- Arrival and welcome coffee with a filled bagel (17.50€)
 - Lunch in the Manor Hall (30.70€)
 - Meeting at the Headquarters (Päämaja), with coffee/tea/water available throughout the day
 - Afternoon coffee with a sweet treat (17.50€)
 - Activity: for example, perfume-making or a wine tasting in the cellar (priced separately).
 - Dinner: 3- or 5-course menu (69€) with a wine package (bistro wines 44.60€ or cellar wines 78€)
 - Sauna evening and relaxation at the Lake Spa (JärviSpa): wood-fired and electric saunas, hot tub, and winter swimming options
- [Read More](#)

Day 2:

- Breakfast at The Terwa (33.33€)
- Meeting continues at the Headquarters or at the Manor
- Lunch menu (30.70€)
- Departure coffee with a sweet treat (17.50€)

Indicative pricing:

- Entire peninsula reserved for private use with concierge service, single rooms, including all catering services: 7 990€ (VAT 0%)
- Entire peninsula facilities reserved for private use (barn excluded): 5 219€ (VAT 0%)
- Or facilities as needed, e.g. Manor, Headquarters, Lake Spa, accommodation in double rooms including concierge service, meals total approx. 5 950€ (VAT 0%)
- Activities and alcoholic beverages are charged separately. All prices are quoted excluding VAT (0%).

SAMPLE PROGRAM FOR A THREE-DAY MEETING INCLUDING MEALS (20PAX):

Day 1 Arrival:

- Welcome coffee with a warm savory item (17.50€)
- Workshop or meeting at the Headquarters (Päämaja)
- Lunch menu (30.70€)
- Activity: Relaxed wine tasting with cheese and game bites (1 650€ / group) or a Relaxation Moment in Nature (780€ / group)
- Dinner with a 5-course menu (69€) and Bistro wine package (44.60€ / person, charged separately)
- Sauna and lake plunge / ice swimming at the Lake Spa (JärviSpa)

Day 2 Work and wellbeing:

- The Terwa breakfast at the Manor (33.33€)
- Meeting at the Headquarters, with coffee/tea/water provided
- Lunch menu (30.70€)
- Activity: Snowshoeing trip or a guided hike around Lake Melkutin, including campfire coffee, packed snacks, and transportation (1 623€)
- Open-fire dinner at Karsina (86€) and wine package (44.60€–78€ / person, charged separately)
- Evening sauna and relaxation at the Karsina sauna

Day 3 Nature and creativity:

- Morning yoga (1.5h, 960€)
- The Terwa breakfast (33.33€)
- Closing meeting at the Headquarters or the Manor
- Lunch menu (30.70€)

Indicative pricing:

- Entire peninsula reserved for private use with concierge service, single rooms, including all catering services: 14 580€ (VAT 0%)
- Or facilities as needed, e.g. the Manor, Boathouse, Lake Spa, accommodation in double rooms including concierge service, with meals included, total 10 990€ (VAT 0%). Activities and alcoholic beverages are charged separately. All prices are quoted excluding VAT (0%).

ENJOY THE AREA'S HISTORY AT THE SAME TIME

The Terwa's location on the shores of Lake Kaartjärvi conceals thousands of years of history. Significant permanent ancient monuments have been discovered in the area, including Stone Age dwelling sites as well as Early Metal Age and Iron Age stone and cultivation cairns. The hill on which the manor stands has therefore been inhabited for millennia.

The present-day main building of The Terwa is part of the Salo Manor, which was formed in the 17th century from five farms. For more than 300 years, the manor served as a noble cavalry estate owned by the Laurentz family.

The oldest parts of the current main building date back to 1800, with a major extension added in the 1850s.

From the mid-20th century onwards, the manor was known as Riihisalo, when it functioned as a conference and training center owned by the City of Riihimäki.

Today, The Terwa continues this long tradition, place where history remains visible in the landscape, the buildings, and the idyllic surroundings. Welcome to host your important meetings with us and to become part of the estate's ongoing history.





ROTISSEUR-LEVEL EXECUTIVE CHEF AND MEETING CATERING

The Terwa offers unforgettable culinary experiences that bring together Finnish local cuisine, handcrafted delicacies, and the manor's traditional atmosphere.

For us, food is more than just a meal—it is part of an immersive experience where pristine nature, locally sourced ingredients, and high-quality service come together

GROUP MENUS

Breakfast 33.33€ / person

Lunch menus from 26.30€ / person

Dinner from 60.50€ / person – three- or five-course dinner

Open Fire Dinner 86€ / person – a warm and immersive dining experience in Karsina

BEVERAGE SERVICE

All public areas are licensed for the serving of alcohol. We offer a curated yet high-quality selection of waters and soft drinks, bistro and cellar wines, non-alcoholic wines, cocktails, and digestifs.

FACILITIES AND CAPACITY

- Banquet Barn: 200 seated guests / 300 cocktail-style
- Manor: 60 seated guests, 20 overnight guests
- Karsina, LakeSpa (JärviSpa), Maisematupa: 25 guests
- Headquarters (Päämaja: for preparation, meetings, or smaller events, 25pax



DINNER MENUS

The Terwa menu

- Beetroot, goat cheese, walnut, white currant, dill
- Crayfish soup, crayfish tails, fennel
- Heritage-breed beef tenderloin, cognac pepper sauce, potato, carrot
- Preserved garden apple, sablé biscuit, salted caramel, toasted almond, vanilla ice cream
- Chocolate pralines

Game Menu

- Jerusalem artichoke, fresh truffle
- Sugar-cured whitefish, apple, kohlrabi, almond
- Venison tenderloin, Calvados sauce, parsnip, onion
- Chocolate and orange
- Artisanal cheeses, jam

Dinner pricing: 3 courses 60.50€, 5 courses 69€

Menus are examples. Please ask about fish and/or vegetarian menu options.

For special requests, please contact taste@theterwa.com



OPEN FIRE DINNER

A warm, immersive, and rustic dinner in Karsina

The dinner is prepared over an open fire and glowing embers using only domestic, in-season ingredients. The result is a dining experience that combines the deep flavors of the embers with a relaxed, shared-meal atmosphere.

Choose Carnivore (meat) or Pescetarian (fish/vegetarian):

Carnivore table includes:

- Various meats depending on seasonal availability, for example beef brisket, lamb rack, marinated chicken, venison, beef fillet

Pescetarian table includes:

- Main ingredients depending on seasonal availability, for example trout, whitefish, halloumi, marinated tofu, goat cheese

Additionally:

- Fresh seasonal salads for sharing
- Rich, well-seasoned sauces to complement the grilled dishes
- Side vegetables and potatoes
- Fresh sourdough bread and browned butter
- Refreshing dessert

Price: 86€ / person

Table arrangements: 10pax table and 8pax table

Minimum number of guests: 10 | Maximum: 18



SUMMARY OF THE TERWA FACILITIES

Manor (Kartano) 8 double rooms, 1 930€ / night (VAT 0%), accessible

- 3 rooms with private shower/WC, 2-bedroom suite (caretaker's apartment) and 3-bedroom suite (2nd floor, no elevator)
- [Read more from The Terwa website](#)

Väentupa 3 double rooms, 700€ / night

- Three-bedroom villa, separate WC and separate bathroom with WC
- [Read more](#)

Boathouse (Venevaja) double room, 351€ / night

- Over the water, WC/shower
- [Read more](#)

Beach Cabin (Rantamökki) double room, 219€ / night

- WC/shower
- On the shore
- [Read more](#)

Headquarters (Päämaja) 438€ / day or evening, lower-level junior suite for overnight stay + 200€

- WC/shower
- [Read more](#)

Lake Spa (JärviSpa) Saunas, ice bath/lake, and hot tub available, 526€. Overnight use + 200€ for double room and hot tub heating service + 200€

- Accessible
- WC/showers
- [Read more](#)

Banquet Barn (Navetta) Event space for seminars and seated dinners of 60–200pax, cocktail capacity 300, includes Karsina and Karsina terrace, 3 070€, accessible

- Open-fire barbecue area
- Accessible WC and five unisex WCs
- Karsina terrace
- [Read more](#)

Maisematupa 438€, summer use for meetings and cocktails, capacity 30pax (15 indoors)

- Grill and wok facilities
- Stunning natural scenery with retractable glass walls
- [Read more](#)

Villa K: 3 double rooms, upper floor open space, plus 2 double rooms, 1 190€

All prices exclude VAT (0%)

See detailed descriptions of each facility on the following pages.



HISTORIC MAIN BUILDING: THE TERWA MANOR

The historic Terwa Manor is the heart of the estate. Built in 1850 and fully renovated, the manor offers accommodation for 20pax (16 + 4), restaurant facilities for up to 60pax with lake views, a bar, lounge, wine cellar, and a high-quality rotisseur-level kitchen.

THE MANOR: A VALUABLE AND WARM-HEARTED ENVIRONMENT FOR CORPORATE EVENTS

The Terwa Manor provides a unique setting for meetings, combining a historic atmosphere, high-quality interiors, and a cohesive overall experience. The manor is ideal for seminar weekends when accommodation, meals, and togetherness under one roof are desired.

Built in 1850 and fully renovated, the building functions as an elegant yet approachable meeting venue throughout the year

- Accommodation for up to 20pax
- Restaurant hall, lounge, and bar that easily convert for dining and evening events (total approx. 60pax)
- Wine cellar for 15pax, perfect for intimate dinners or special program elements
- Large private kitchen and serving area
- For events over 60pax, celebrations are held in the Banquet Barn, where seated dinners for up to 200pax can be served
- Accessible entrance and WC on the ground floor
- Speaker sound system, karaoke equipment, and high-quality audio system







EXCLUSIVE HEADQUARTERS FOR EXECUTIVE TEAMS

The Terwa Headquarters (Päämaja) provides an efficient and peaceful environment for meetings, negotiations, and corporate events. Built in 2022, this meeting space combines modern technology, an inspiring atmosphere, and practical layout solutions, making it an ideal location for executive team meetings, client gatherings, and strategy workshops.

THE HEADQUARTERS: MODERN AND WELL- EQUIPPED HYBRID MEETING SPACE

The Headquarters (Päämaja) offers a modern and distraction-free environment where meetings can be conducted efficiently and comfortably. This space is an excellent choice for companies that value a clear, technologically well-equipped venue that supports productive and enjoyable work.

- Capacity for 25pax
- Hybrid meeting equipment and high-quality connectivity to support smooth remote and hybrid meetings
- The Headquarters' break room allows for easy catering during meetings, and the Manor's restaurant and accommodation facilities support multi-day meetings







BANQUET BARN (NAVETTA) IS A VERSATILE AND ATMOSPHERIC VENUE FOR CELEBRATIONS, SEMINARS, AND DINNERS

The Terwa Banquet Barn (Navetta) offers historic yet fully renovated facilities that can accommodate large celebrations, dinners, and private events. Originally built in the 1850s and now completely restored, space combines the openness of a large stone barn, modern amenities, and traditional stone and log construction. Banquet barn is a memorable venue for meetings, corporate events, and other major celebrations.

BANQUET BARN'S FACILITIES AND POSSIBILITIES

The Banquet Barn (Navetta) provides a versatile and adaptable environment that supports both relaxed and more traditional meeting days:

- Capacity for up to 300pax, seated meetings for 200pax
- Large loft adding space and visual impact, also usable as a retreat area
- Main area is accessible, ensuring comfortable participation for all guests
- Sound system suitable for background music
- Speaker sound system, also suitable for karaoke
- Rotisseur-level kitchen produces Upscale and The Terwa buffet. Also possible to serve plated meals for 200pax, standing for 300pax
- Karsina space (120 m²) serves as an impressive additional area during events or in the evening as an atmospheric wilderness-style sauna

You can also combine the intimate moments in the Manor's wine cellar, the warmth of the beach sauna, or activities in the middle of nature with your meeting day, making the whole experience unforgettable.



KARSINA AND MEETING SAUNA

The cabin-like Karsina is part of the Banquet barn complex, combining a lounge area with an open fire, dining facilities, and a sauna, making it an excellent choice for small to medium-sized meetings.

The Meeting Sauna located within Karsina combines a spacious meeting area, a traditional sauna experience, and relaxed social interaction. This unique space is ideal for corporate groups, team days, and private events where meetings, good food, and a shared sauna evening are desired.

- 120 m² lounge with fireplace (for 25pax), perfect for gathering and enjoying shared time
- Large sauna providing a pleasant steam experience for groups
- Indoor grill with open fire, enabling dining during meetings (specialty: The Terwa carnivore menu, also available as a vegetarian option)
- Rotisseur-level kitchen
- Wi-Fi, meeting equipment, and sound system for presentations and background music

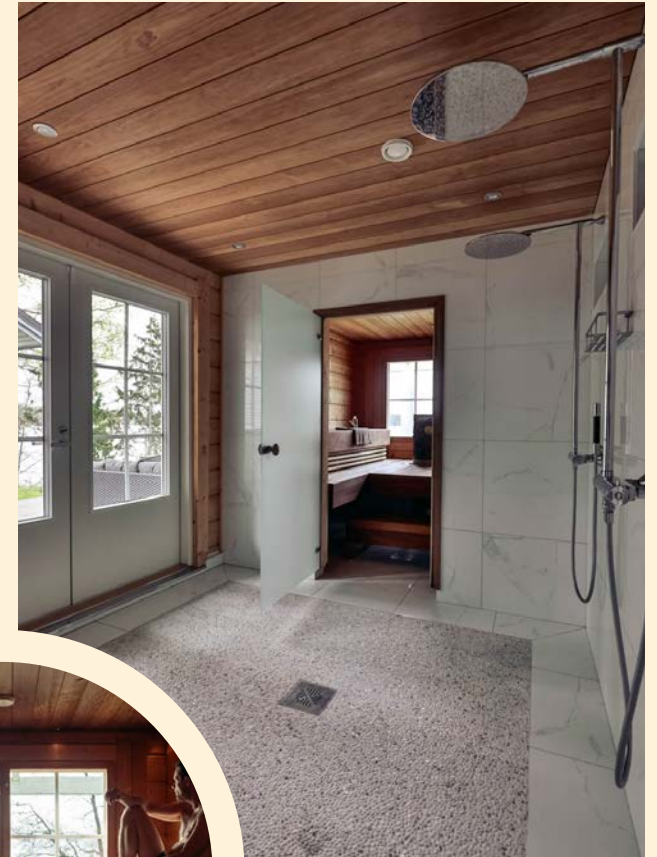




LAKE SPA AND SAUNAS INVITE YOU TO RELAX

The Terwa offers traditional Finnish sauna culture combined with a modern lake spa experience. Situated on the shore of the lake, the LakeSpa (JärviSpa) and its saunas provide a place for relaxation, refreshment, and socializing. Here, you can enjoy the gentle heat of a traditional wood-fired sauna, bathe in the outdoor hot tub or jacuzzi, and take in the lake views year-round. The lounge with a fireplace features Wi-Fi and a 55" screen, making it suitable for relaxed meetings.







FROM THE WORKERS' HOUSE TO THE LAKESIDE CABIN

The Terwa estate features over 20 buildings, nearly all of which can be used for your event.

In addition to the Manor, Barn Hall, The Stall, and LakeSpa, the grounds include: The Headquarters, Workers' House (Väentupa), Lakeview Cottage (Maisematupa), Boathouse (Venevaja), Lakeside Cabin (Rantamökki), Mökömaja Cottage, Threshing Barn (Puimala), Hunting Lodge (Metsästysmaja), Stable, Secret Bar (Salakapakka), Henhouse, and Root Cellar.

Together, they create a truly unique wedding village — full of character and charm.





RELAX ON THE ESTATE OR EXPLORE THE SURROUNDINGS

The Terwa offers something for everyone. Nestled in nature, our location provides peace and quiet for those seeking relaxation, while those who enjoy active pursuits can embark on long hikes or join organized day trips to the surrounding area. Explore our services below and help us create a meeting day tailored exactly to your needs.

DOZENS OF ACTIVITIES AVAILABLE AT TERWA

At Terwa, adults can choose from dozens of activities, including exercise, nature excursions, team-building, handicrafts, and various experiential challenges. Here are just a few popular examples. Read more about our [Activities](#).

YOFA SESSION / 1.5h

- Indoors at Terwa or outdoors in nature
- Relax and rejuvenate through movement, stillness, and connection with nature

INCLUDES: Yoga, mindfulness exercises, and a relaxation session at the end

- Physical intensity: easy, or as agreed
- Activity available year-round, in nearly all weather conditions
- All necessary equipment provided by Terwa

GUIDED HIKE around the crystal-clear lake Melkutin / 2–2.5 h

- Led by a multilingual professional guide

INCLUDES:

- Transportation to the Melkuttimen parking area
- A guide with extensive knowledge of local nature, wildlife, and hiking
- Duration: 2–2.5 hours
- Physical intensity: easy, or as agreed
- Midway campfire coffee break with Terwa snacks and sausage roasting (vegetarian options available)
- Wear weather-appropriate outdoor clothing and shoes suitable for walking in nature
- Activity available in spring, summer, and autumn, in almost all weather conditions
- Rain ponchos provided for wet weather

In winter, the hike is conducted as a **SNOWSHOE HIKE** / 2–2.5 h



**WARM WELCOME TO
THE TERWA,
MORE INFORMATION AT
[THETERWA.FI](https://theterwa.fi)**



CONTACT

Sales:

myynti@theterwa.com

+358 40 049 0922

Rautakoskentie 421,
12920 Loppi, Finland

theterwa.fi





THE TERWA
NORDIC HIDEAWAY